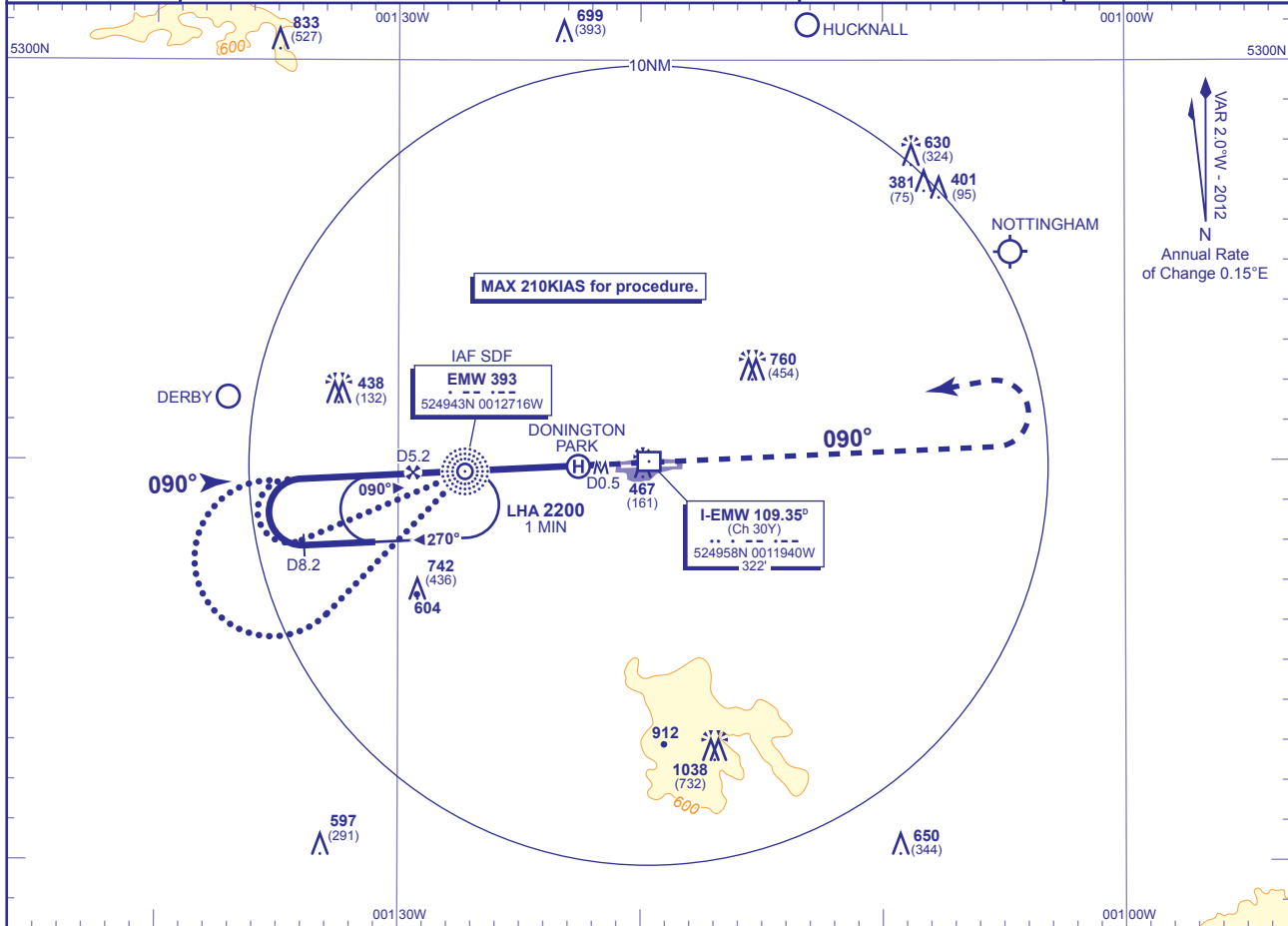


INSTRUMENT APPROACH CHART - ICAO

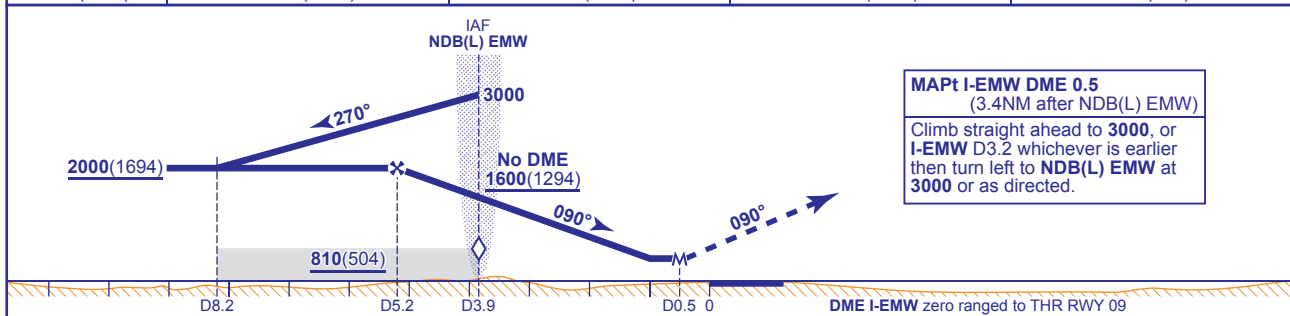
**EAST MIDLANDS**  
**NDB(L)/DME**  
**RWY 09**  
 (ACFT CAT A,B,C,D)

	APP 134.175	EAST MIDLANDS APPROACH	AD ELEVATION 306
	TWR 124.000	EAST MIDLANDS TOWER	THR ELEVATION 306
	121.900	EAST MIDLANDS GROUND	OBSTACLE ELEVATION 1038 AMSL (732) (ABOVE THR)
	RAD 134.175, 120.125, 124.000	EAST MIDLANDS RADAR	BEARINGS ARE MAGNETIC
	ATIS 128.225	EAST MIDLANDS INFORMATION	TRANSITION ALTITUDE 6000



RECOMMENDED PROFILE Gradient 5.2%, 320FT/NM

DME I-EMW	5	4	3	2
ALT(HGT)	1960(1654)	1640(1334)	1320(1014)	990(684)



Aircraft Category	Procedure	Aircraft Category				Rate of descent	DME I-EMW zero ranged to THR RWY 09				
		A	B	C	D		G/S KT	160	140	120	100
OCA (OCH)	Procedure	720(414)	720(414)	720(414)	720(414)	FT/MIN	840	740	630	530	420
VM(C)OCA (OCH AAL)	Total Area	800(494)	800(494)	1200(894)	1200(894)	NDB(L) EMW to MAPt (3.4NM) MIN:SEC	1:16	1:27	1:42	2:02	2:33

**ALTERNATIVE PROCEDURE**  
 From overhead NDB(L) EMW **not below 3000**(2694) fly outbound on NDB(L) EMW QDR 250° (CAT A,B); NDB(L) EMW QDR 232° (CAT C,D), descending to **not below 2000**(1694). At I-EMW DME 8.2 baseturn right to intercept the FAT. Once established on the FAT continue as for main procedure.

**AIRCRAFT UNABLE TO RECEIVE DME I-EMW NOTIFY ATC**  
**PRIMARY PROCEDURE:** Fly outbound leg of racetrack for 1MIN 30SEC (CAT A,B), 1MIN (CAT C,D), then turn right to establish on the FAT. MAX 210KIAS. Once established on the FAT descend to cross SDF overhead NDB(L) EMW **not below 1600**(1294) and then to MDA(H).  
**ALTERNATIVE PROCEDURE:** Fly outbound leg of baseturn for 1MIN 45SEC (CAT A,B), 1MIN 15SEC (CAT C,D), then turn right to establish on the FAT. MAX 210KIAS. Once established on the FAT descend to cross SDF overhead NDB(L) EMW **not below 1600**(1294) and then to MDA(H).

**NOTE 1** Lowest altitude to commence procedure from hold is **3000**.  
**2** Aircraft will normally be required to hold not lower than **3000**.

**CHANGE (7/12):** MAG VAR. FAT. MAP. HOLD. REC PROFILE. MOCA BOX. SDF. ALTERNATIVE PROCEDURE. OBSTACLES.