

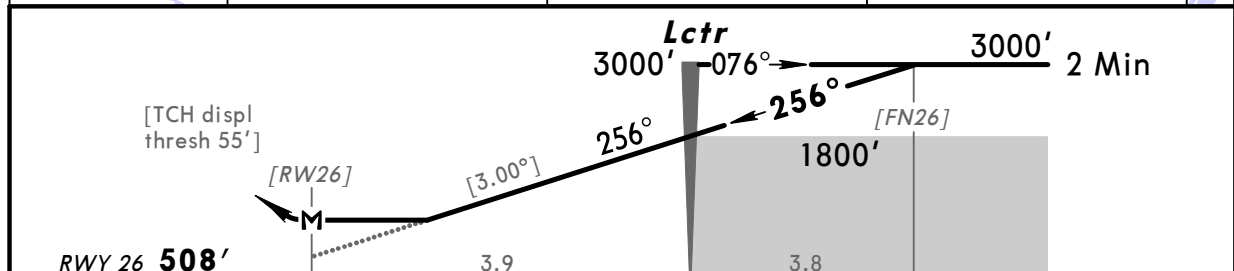
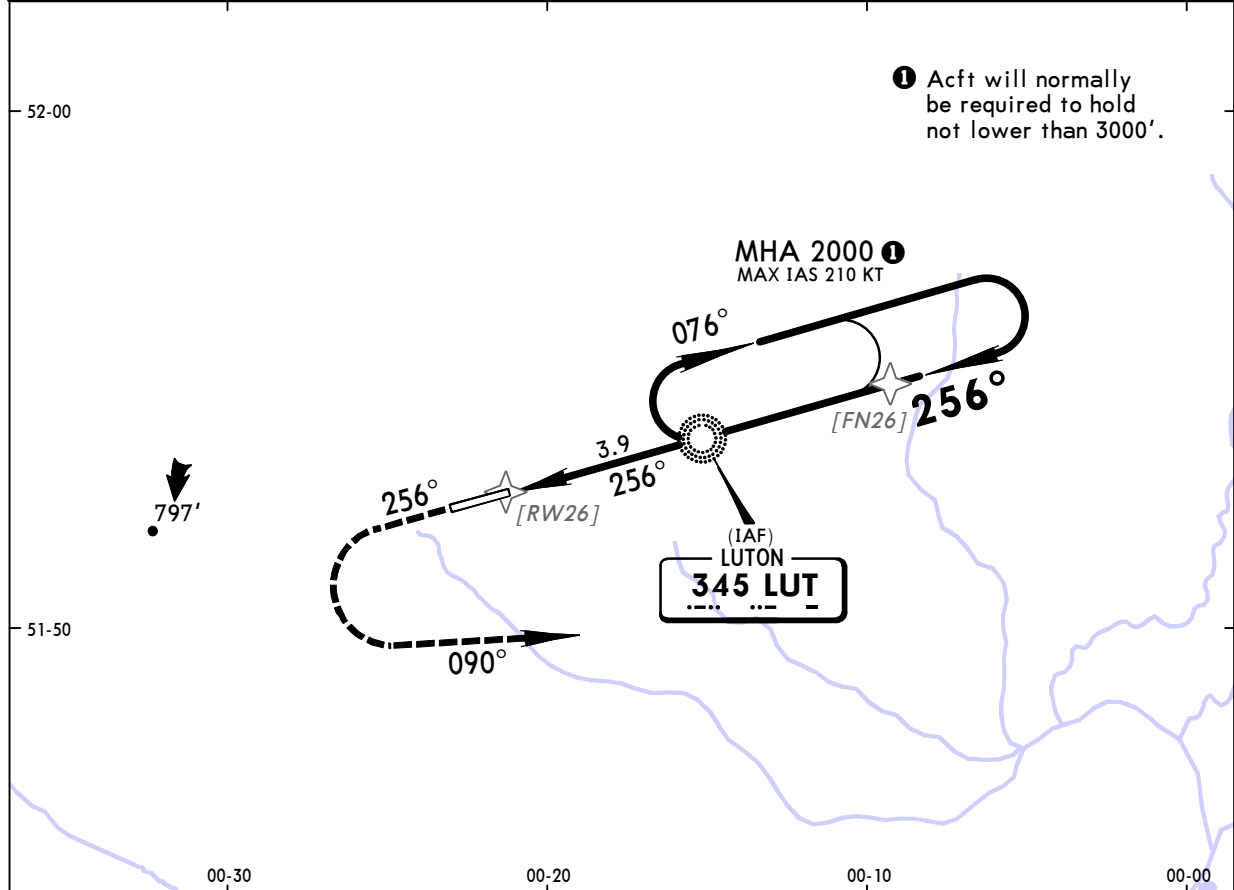
EGGW/LTN
LUTON

JEPPESEN
1 MAY 09 **(56-1)** Eff 7 May

LONDON, UK
NDB Rwy 26

BRIEFING STRIP™

ATIS 120.57		LUTON Radar (APP) 129.55		LUTON Tower 132.55	*Ground 121.75
Lctr LUT 345	Final Apch Crs 256°	Procedure Alt Lctr 1800' (1292')	MDA(H) 930' (422')	Apt Elev 526' RWY 508'	<p>2000' 090° ← → 270° 2200' ↑ ↓ 2100' 360° MSA LUT Lctr</p>
<p>MISSED APCH: Climb to 3000'. Climb STRAIGHT AHEAD to 1500', then turn LEFT onto track 090°, continue climb to 3000', then as directed.</p> <p>Radio failure: Follow Missed Apch procedure to 3000', then return to Lctr at 3000'.</p>					
Alt Set: hPa		Rwy Elev: 18 hPa		Trans level: By ATC	Trans alt: 6000'



[TCH displ thresh 55']		RWY 26 508'						TO DISPLACED THRESHOLD	
Gnd speed-Kts		70	90	100	120	140	160	HIALS PAPI 1500'	
Descent Gradient	5.24% or	372	478	531	637	743	849		
Descent Angle	[3.00°]								
Lctr to MAP		3.9	3:21	2:36	2:20	1:57	1:40	1:28	

JAR-OPS				STRAIGHT-IN LANDING RWY 26				CIRCLE-TO-LAND			
MDA(H) 930' (422')											
								ALS out			
A	RVR 900m			RVR 1500m			Max Kts	MDA(H)		VIS	
B	RVR 1000m			RVR 1800m			100	1000' (474')		1500m	
C	RVR 1400m			RVR 2000m			135	1100' (574')		1600m	
D							180	1300' (774')		2400m	
							205	1300' (774')		3600m	

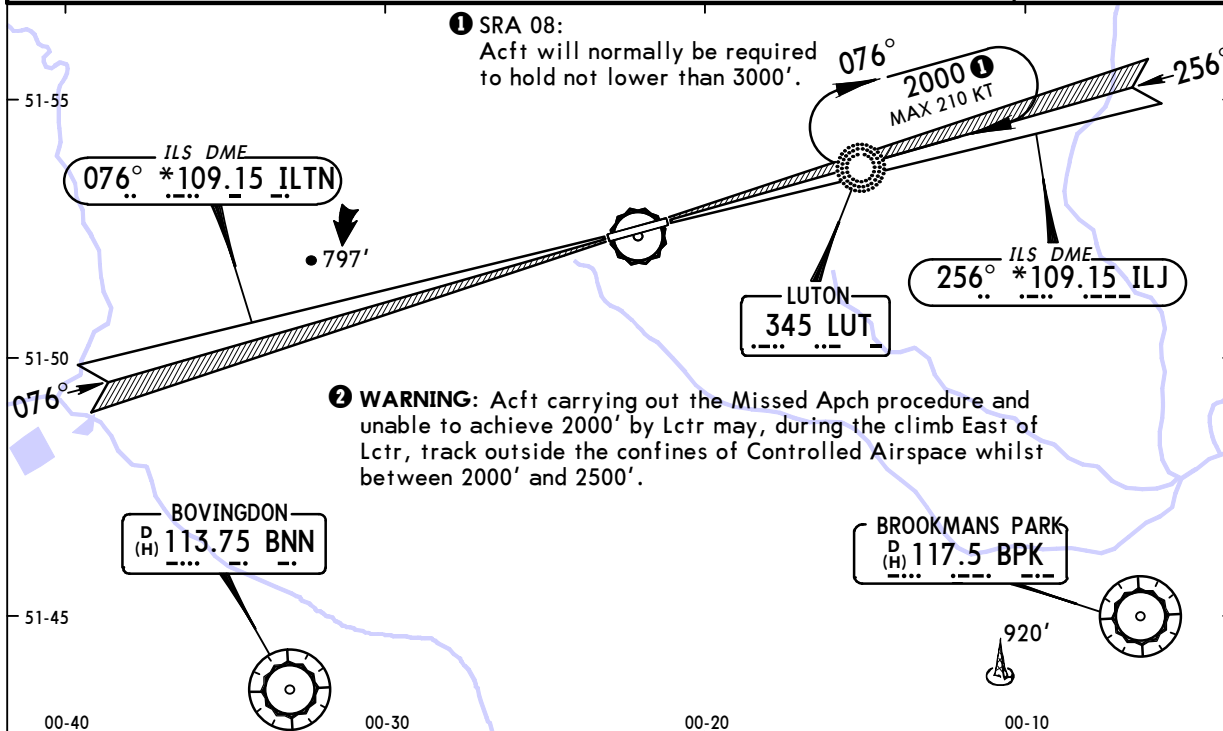
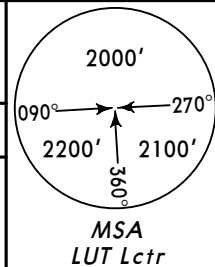
PANS OPS 4

EGGW/LTN
LUTON

JEPPESEN
 1 MAY 09 **(58-1)** Eff 7 May

LONDON, UK
SRA All Rwys

ATIS 120.57	LUTON Radar (APP) 129.55	*LUTON Director (SRA) (by ATC) 128.75	LUTON Tower 132.55	*Ground 121.75
RADAR	<i>Final Apch Crs</i> By ATC	<i>Minimum Alt See</i> table below	<i>MDA(H)</i> Refer to Minimums	<i>Apt Elev</i> 526' <i>RWY 08</i> 515' <i>RWY 26</i> 508'
Missed Approach - See below				
Alt Set: hPa Apt Elev: 19 hPa Trans level: By ATC Trans alt: 6000'				
1. ILS DME reads zero at both rwy thresholds. 2. SRA 08: Intense gliding activity during daylight hours North of and beneath final apch track. 3. SRA 26: Acft unable to receive DME, inform ATC.				



SRA 08	RADAR FIX	5.0	4.0	3.0	2.0		
	ALTITUDE	2000'	1700'	1410'	1110'		
SRA 26	RADAR FIX	7.0	6.0	5.0	4.0	3.0	2.0
	ALTITUDE	2780'	2460'	2130'	1810'	1480'	1160'
Minimum Alt/NM	7.5 FAF	Lctr	5.0 FAF	3.0			
SRA 08 Tmn 2.0	—	—	2000'	1410'			
SRA 26 Tmn 2.0	3000'	1800'	—	—			

MISSED APPROACH: Rwy 08: Climb STRAIGHT AHEAD to Lctr to hold at 3000', or as directed. Acft which achieve 2000' by Lctr continue climb in the hold. Acft unable to achieve 2000' by Lctr inform ATC and continue climb on 076° from Lctr to 2000', then turn RIGHT to Lctr to hold at 3000', or as directed. ②

Rwy 26: Climb to 3000'. Climb STRAIGHT AHEAD to D1.5 ILJ outbound or 1500', whichever is later, then turn LEFT onto track 090° continue climb to 3000', then as directed.

Radio failure: Follow missed apch proc to 3000', then return to Lctr to hold at 3000', or as directed.

<i>Gnd speed-Kts</i>	70	90	100	120	140	160	Lighting - Refer to Airport Chart	Refer to Missed Apch above
SRA 08: Descent Gradient 4.9%	348	447	497	596	695	794		
SRA 26: Descent Gradient 5.4%	383	492	547	656	766	875		
<i>MAP 1 NM from touchdown or TMN 2 to MAP</i>	1.0	0:51	0:40	0:36	0:30	0:26	0:23	

PANS OPS 4	JAR-OPS STRAIGHT-IN LANDING				CIRCLE-TO-LAND		
	SRA 08		SRA 26				
	<i>MDA(H)</i> 990' (475')		<i>MDA(H)</i> 940' (432')				
	ALS out		ALS out		Max Kts.		
	RVR 1500m		RVR 1500m				
A	RVR 1400m	RVR 1000m	RVR 900m	100	1000' (474')	1500m	
B	RVR 1500m		RVR 1500m	135	1100' (574')	1600m	
C	RVR 1600m	RVR 2000m	RVR 1800m	180	1300' (774')	2400m	
D	RVR 1800m		RVR 1400m	205	1300' (774')	3600m	